

# Sun City Plumbing **Capability Statement**



**SUN CITY PLUMBING**  
*plumbing solutions*



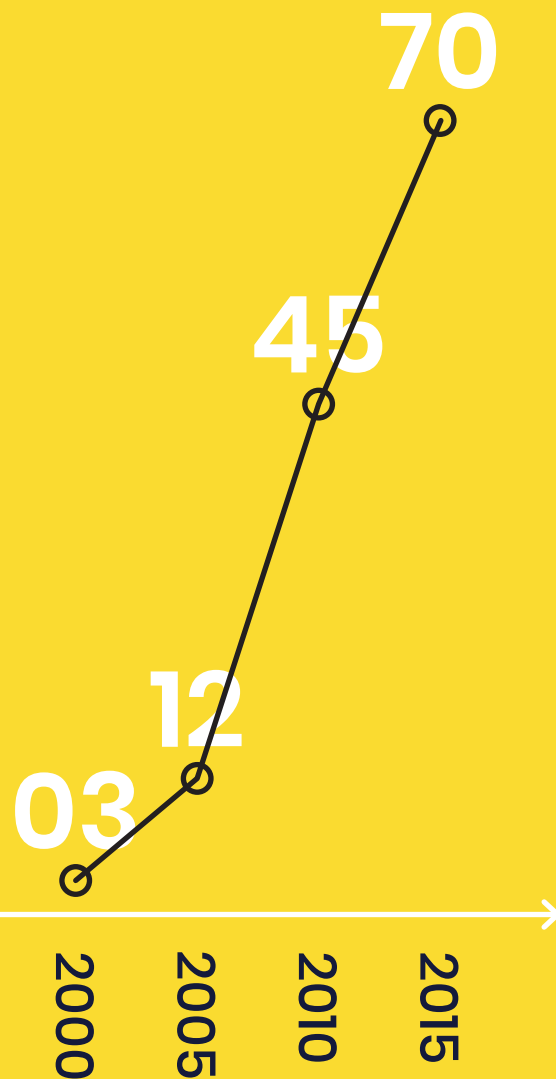
Company Profile & History	04
Company Structure	06
Scope of Services	09
Fleet, Plant & Equipment	12
Recent Projects	15
Health, Safety & Environment	18



**We pride ourselves on building top quality homes,  
and to achieve that we only use top quality tradesmen.  
Sun City Plumbing fits that bill perfectly.  
Their skill and professionalism is first class.**

**Warren Taylor, Director at Warren Taylor Homes**

Workforce Growth  
2000-2015



## Company Profile & History

Based in Geraldton, Sun City Plumbing is a dedicated organisation of plumbing professionals providing innovative plumbing solutions throughout Western Australia.

### History

Sun City Plumbing was founded in Geraldton as Chester Plumbing by Michael Chester in 2000. Since then our company has grown from just three employees, to be one of the largest plumbing suppliers and contractors in the state.



## Company Profile & History

### One Stop Shop Plumbing Service

Our experienced team of professional trades persons including plumbers, boilermakers, gasfitters and machine and plant operators have provided plumbing solutions for remote camps and installations in the Mid West and Pilbara since 2007, along with maintenance work for major construction companies.

These onsite professionals are backed up with a team of experienced administrative and management team members which includes contract administrators, administrative assistants, estimators, project managers and maintenance team members making Sun City Plumbing a one-stop shop for every project from start to finish.

The company is equally at home in the domestic market, working with some of the region's most respected building companies and land developers and providing maintenance to local hospitality industries.

### Investing in our Community

Sun City Plumbing believes in giving back to the community in which we operate as we want to see local businesses thrive and grow in the Mid West. We are a proud and proactive supporter and sponsor of local clubs and organisations throughout the region.

Mick Chester  
**Director**

Ashley Sojan  
**General Manager**

# Company Structure

## Administration

Department	HR & OHSE	Estimating	Purchasing	IT	Office & Admin
Management	<b>HR &amp; OHSE Manager</b> Ashley Sojan	<b>Estimating Manager</b> Ashley Sojan	<b>Purchasing Manager</b> Mick Chester	<b>IT Manager</b> Mick Chester	<b>Office Manager</b> Christine Blayney
Tier Two	<b>Contracts Administrator, HR &amp; OHSE Leader</b>	<b>Senior Estimator</b>	<b>Purchasing Officer</b>	<b>IT Coordinator</b>	<b>Payroll Officer</b>
Tier Three	<b>HR Coordinator</b>	<b>Assistant Estimator Scheduler</b>	<b>Stores Person</b>	<b>Operations Support Officer</b>	<b>Accounts Receivable, Accounts Payable</b>
Tier Four	-	-	-	-	<b>Office Assistant</b>


Mick Chester  
**Director**

Ashley Sojan  
**General Manager**

# Company Structure

## Operations

Fleet	Commercial	Fabrication	Housing	Remote & Mining	Maintenance
<b>Fleet Manager</b> Mick Chester	<b>Commercial Manager</b> Kyle Chester	<b>Fabrication Manager</b> Mick Chester	<b>Housing Manager</b> Kyle Chester	<b>Remote Manager</b> Ashley Sojan	<b>Maintenance Manager</b> Damien Barnden
<b>Asset Trenching</b>	<b>Site Supervisor</b>	-	-	<b>Project Manager</b>	<b>Site Supervisor</b>
<b>Machine Operator, Truck Driver, Asset Maintenance</b>	<b>Trades Person</b>	<b>Trades Person</b>	<b>Trades Person</b>	<b>Trades Person</b>	<b>Trades Person</b>
<b>Mechanic Workshop</b>	<b>Apprentice</b>	<b>Apprentice</b>	<b>Apprentice</b>	<b>Apprentice</b>	<b>Apprentice</b>



**The real estate industry is a fast paced business,  
and at times I need to call on a tradesperson at short notice.  
The guys at Sun City Plumbing are always obliging when I want  
a plumber in a hurry; they are prompt, professional and friendly.  
I always recommend them to my clients too!**

**Lara Sadowski, Director at Geraldton Property Team**

- ✓ Mining
- ✓ Earthmoving
- ✓ Plant Hire
- ✓ Commercial
- ✓ Domestic
- ✓ Fabrication
- ✓ Transport

## Scope of Services

Providing Superior Results  
Through Personalised Service

---

Sun City Plumbing provides a wide range of plumbing solutions to the mining, industrial, commercial, and domestic industries throughout the Mid West and Pilbara regions of Western Australia.

We are compliant in all health, safety and environmental policies, providing a safe work environment for employees and subcontractors on every job.



## Scope of Services

### **Mining**

Delivering specialised services to the growing mining industry in Western Australia, Sun City Plumbing aims to supply each client with the total plumbing package. From general and maintenance to specialist plumbing installations, Sun City Plumbing is committed to offering the most professional and efficient services at competitive rates.

### **Earthmoving & Plant Hire**

With our fleet of quality earthmoving machinery and team of experienced operators, Sun City Plumbing can assist with any earthwork requirements. We offer a large range of excavators and trucks, rock breakers, wheel loaders and a skid steer loaders.

### **Commercial**

Sun City Plumbing specialises in complete plumbing services for all commercial ventures. The company's commercial plumbing experience is extensive and varied using quality equipment.



## Scope of Services

### **Domestic**

Sun City Plumbing takes care of anything from emergency repairs, new housing requirements to renovations and preventative maintenance.

### **Workshop Fabrication**

To support our site-based project works, Sun City Plumbing operates an engineering workshop from our Geraldton base. The workshop specialises in the fabrication of pipe spoiling, mechanical and plate work fabrications and caters for any type of associated steelwork from our workshop or onsite.

### **Transport Services**

Sun City Plumbing has a range of trucks and trailers to cater for all your transport needs. We can transport general freight or heavy haulage and oversized loads to anywhere in Australia.

# Fleet, Plant & Equipment

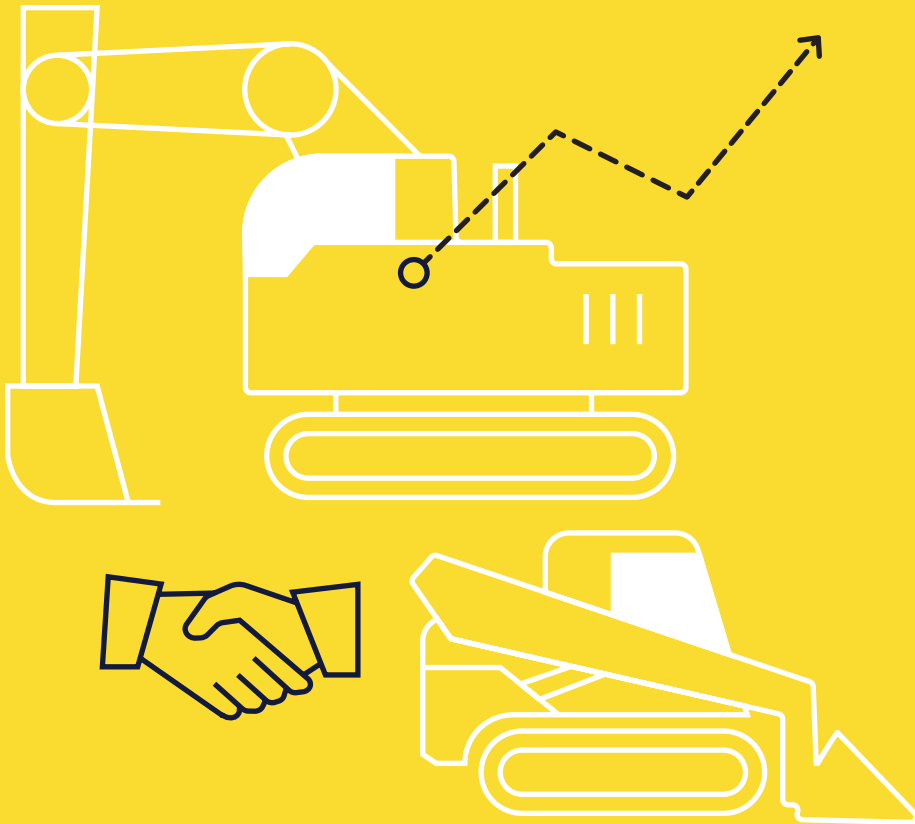
## Improving Results Through Greater Equipment Capability

---

Through our plant hire division, SCP Plant Hire, we can provide a complete plumbing, earthworks and transport service across Western Australia with our fleet of trucks, trailers and machinery, and our dedicated team of skilled operators.

Our late model, low hour machinery including excavators, rock breakers, wheel loaders and skid steer loaders can be supplied on a wet or dry hire depending on your needs. All plant and equipment supplied by SCP Plant Hire is regularly and routinely maintained by our experienced maintenance personnel.

We also hire out of a range of tools, plant and equipment for plumbing and general construction work.





# Fleet, Plant & Equipment

## Earthmoving Machinery

- 1.7t Excavators and Rock Breaker
- 8t Excavators and Rock Breaker
- 13t Excavator and Rock Breaker
- 20t Excavators and Rock Breaker
- 30t Excavator and Rock Breaker
- Skid Steers
- Wheel Loaders
- Augers 150mm to 1800mm

## Trucks

- Mine Spec Dual Cab Utes
- Mine Spec 3t Single Cab
- 6 Wheel Flat Bed Tipper
- 6 Wheel with Hiab and Hydraulic Ramps
- 6 Wheel Tip Trucks
- Prime Movers
- 6 Wheel Water Truck
- 6 Wheel Vacuum Truck

## Trailers

- Box Trailer – Tools
- Mini Excavator Trailers
- 6T Plant Trailer
- Tri Axle Drop Decks with Ramps
- Dollys
- 50 Ton Quad Float and Dolly
- Tri Axle Semi Tipper
- Grain Trailer Tipper
- Flat Bed A Trailer
- 45Ft Flat Beds
- Air Compressor Trailer
- Curtainside 45ft Trailer

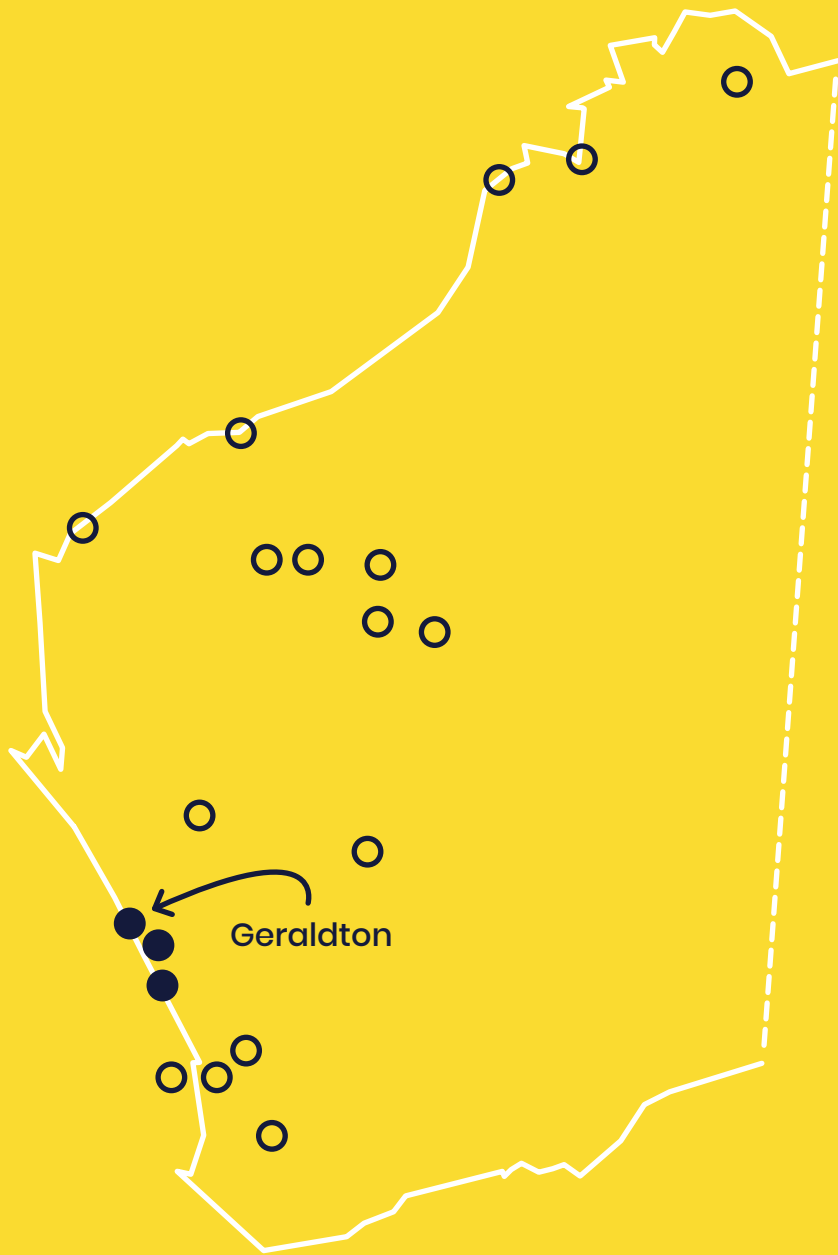
## Tools & Equipment

- Drain Camera
- Drain Machines
- Sea Containers
- Site Offices
- Power Tools
- Hand Tools
- Pipe and Rotating Laser Levels

A low-angle shot of a construction worker wearing a yellow t-shirt and a black baseball cap. He is holding a black Makita power tool, likely a reciprocating saw, and is working on a wooden structural frame. The frame consists of various wooden beams and girders, some of which are secured with metal brackets. The worker is looking upwards with a focused expression. The background is bright and slightly out of focus, suggesting an outdoor construction site.

**Our company undertakes a vast range of building projects, from heritage to modern, domestic to commercial and Sun City Plumbing is always able to produce the most professional, cost effective and timely plumbing solutions across the spectrum. This gives us peace of mind and our clients' complete satisfaction.**

**Peter Fleay, Director at GBSC**



## Recent Projects

Sun City Plumbing's projects cover a diverse range across many locations around the state from Southern Cross in the south east to Port Hedland in the north of WA.

These projects cut across the mining, commercial and domestic markets and the company is well equipped to take on large commercial and mining projects.

Sun City Plumbing continues to expand its capability for large scale projects by ensuring it has the most up-to-date, state-of-the-art equipment and technology to undertake the largest of jobs.

- Remote Mining & Maintenance
- Housing & Commercial



## Recent Projects

### Remote Mining

- BHP Yandi Maintenance Works
- Cape Lambert Port B Project
- West Angelas MEM
- Parker Point Gas Storage Workshop
- Yandi HV Workshop
- Yandi Sustaining Project
- Jimblebar Hub Industrial Buildings
- BHP Eastern Crib Hut Project
- Tom Price EPCM Facilities
- Jimblebar Hub Admin Building
- Jimblebar - Washdown Bay and Oily Water
- RIO Yandi 24 Room Installation
- CSIRO Murchison Astronomy Observatory Support Facility
- Ore Body 24 Industrial Buildings
- Yandi HV Fuel Facility Crib and Ablution
- Koodaideri Hose Reel Replacement
- Warrawandu 200 man Building Installation
- RGP5 Poly Main Replacement
- Karara Port Shed Fire Mains
- Brockman 4 120 Man Extension
- Koodaideri Maintenance Work

### Housing

- Steele Campbell Homes
- Geraldton Homes
- Coral Coast Homes
- Warren Taylor Homes
- Zorzi Builders
- Maintenance
- Water Corporation
- Butterfields Services
- WA Country Health Services Midwest
- Active West Real-Estate
- Ray White Geraldton
- MRAC

### Commercial

- Broadwater Mariner Apartments
- Caltex Foodary Geraldton
- Cutler and Smith
- RCR Fire Main
- Opal Aged Care
- Marina 50 Apartments
- Ningaloo Visitors Centre
- Dongara High School
- Geraldton City Office Upgrade

An aerial photograph of a construction site. A large, deep pit has been excavated into the ground. An orange excavator is positioned at the edge of the pit. To the right of the pit is a large building with a corrugated metal roof. In the bottom right corner, a white truck is partially visible. The ground is uneven and shows signs of heavy machinery work.

**Through our SCP Plant Hire division, we're able to offer flexible and cost-effective solutions to meet the changing needs of our clients. We believe that no job or site conditions are too difficult to complete and have built a reputation for timely, quality delivery.**

**Mick Chester**, Director at Sun City Plumbing

# Health, Safety & Environment



Promoting a Culture of “Safety First” and Environmental Sustainability Through Training, Supervision and Continuous Improvement

---

## **Good Safety is Good Business**

Sun City Plumbing has gained a solid reputation for building great business relationships with our clients and this has been helped by our responsible approach to safety on the job.

*Sun City Plumbing is Rio Tinto Category 3 contractor compliant.*

We take our employees’ and clients’ safety seriously and take a proactive approach to health and safety policies by establishing correct guidelines. Sun City Plumbing encourages team member participation and input in all matters concerning health and safety. Employees are required to report all unsafe acts and/or conditions they may encounter on a worksite.



# Health, Safety & Environment

## Protecting the Environment

Recognising that environmental protection plays a major role in today's world, Sun City Plumbing takes this issue very seriously and is committed to implementing systems and procedures to facilitate sound environmental management and operating practices.

We aim to go above and beyond regulatory compliance by:

- ✓ Establishing effective waste management and disposal procedures.
- ✓ Improving energy efficiency.
- ✓ Reducing harm on flora and fauna habitats.
- ✓ Minimising the impact on the environment by setting up effective emergency policies.

## Address

7 Box Street Geraldton  
Western Australia 6530

## Postal Address

PO Box 239 Geraldton  
Western Australia 6531

## Administration

Phone / After Hours Callout..... (08) 9921 1700  
Fax ..... (08) 9921 1760  
Email ..... [admin@scpmw.com.au](mailto:admin@scpmw.com.au)



**SUN CITY PLUMBING**  
*plumbing solutions*

